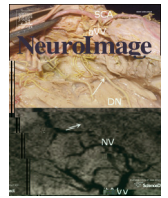




Contents lists available at ScienceDirect

journal homepage: www.elsevier.com/locate/ynimg

Department of Psychology, Arizona State University, Tempe, AZ 85287, USA
 Department of Psychology, Peking University, Beijing, China
 PKU-IDG/McGovern Institute for Brain Research, Peking University, Beijing, China
 Faculty of Psychology, Southwest University, Beibei, Chongqing, China

ARTICLE INFO

Article history:

19 2013
 31 2013

Keywords:

ABSTRACT

has always been less strong
 ()
 ()
 fi
 2013

Introduction

(, 1995) (, 1977).
 (, 2012; , 2009).
 ", (, 1995, .395),
 fi
 ,1991; ,2010)
 ()
 .(2009)
 ()
 (, 2007),
 (, 2010;
 2010).

*
 ,950 , 85287,
 **
 100871,
 E-mail addresses: (), ().

(. . j , 2007;
 , 2000; , 2012; , 2009;
 , 2003) (, 2012; ,
 2009), .

Methods

Participants

(4
 ; 19 24, 10

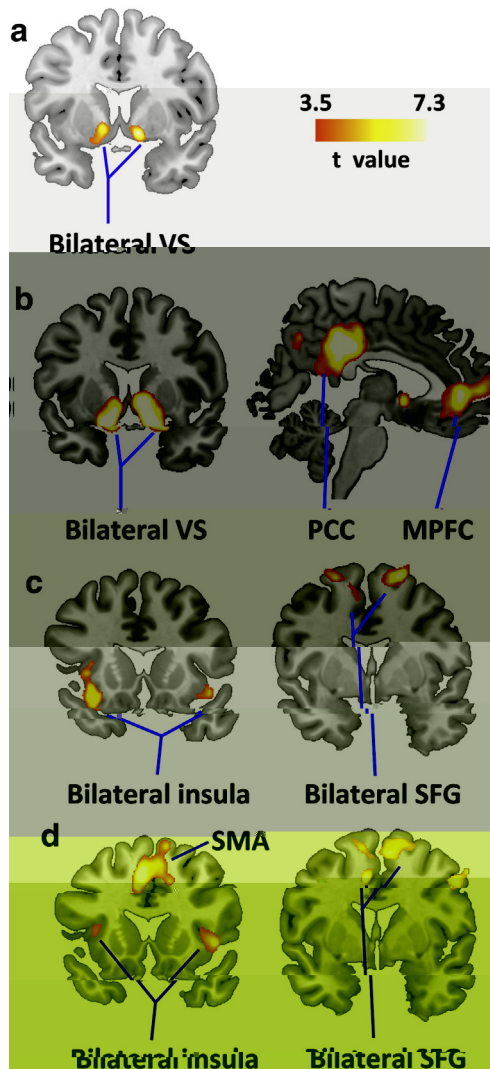


Fig. 2. (a) Coronal slice showing t values (color scale: 3.5 to 7.3). (b) Bilateral VS, PCC, and MPFC. (c) Bilateral insula and bilateral SFG. (d) Bilateral insula and bilateral SFG.

($n = 8$); ($n = 3$); ($n = 17$); ($n = 2$); ($n = 17$); ($n = 2$). (F = 3.13, $p > 0.09$), ($F(1,14) = 3.95$, $p = 0.067$), ($M = 0.55$, $SD = 0.24$; $M = 0.21$, $SD = 0.25$) ($M = 0.37$, $SD = 0.19$; $M = 0.19$, $SD = 0.23$) ($p > .15$). ($r = -0.33$, $p = 0.16$, $p > 0.22$).

Table 1

	Z				
Localizer study, Win vs. Loss					
	-12	5	-8	34	4.11
	12	8	-8	29	4.56
Main study, Win vs. Loss					
	-12	8	-14	152	5.09
	12	11	-11	256	5.63
	3	-34	37	668	5.06
	3	44	1	374	4.56
	48	47	10	35	4.16
	-51	-70	52	44	3.97
	24	38	49	34	3.88
	-54	-61	-11	127	3.87
	-51	-49	-26	21	4.11
	33	-70	43	22	3.59
Localizer study, Loss vs. Win					
	-30	14	-17	92	4.51
	45	17	-11	256	5.63
	-24	14	76	87	4.56
	21	2	70	98	4.49
	-27	-4	55	32	3.87
	42	11	-44	37	4.21
	48	-19	-8	38	3.93
Main study, Loss vs. Win					
	-36	14	4	29	3.48
	42	14	1	118	4.14
	-9	14	46	481	5.81
	-48	-7	22	90	4.75
	51	-1	37	35	4.13
	66	-37	34	44	4.72
	48	-22	-2	33	4.29

Discussion

($n = 8$); ($n = 3$); ($n = 17$); ($n = 2$); ($n = 17$); ($n = 2$). (F = 3.13, $p > 0.09$), ($F(1,14) = 3.95$, $p = 0.067$), ($M = 0.55$, $SD = 0.24$; $M = 0.21$, $SD = 0.25$) ($M = 0.37$, $SD = 0.19$; $M = 0.19$, $SD = 0.23$) ($p > .15$). ($r = -0.33$, $p = 0.16$, $p > 0.22$).

[illegible]

